



Discharge Measurement Summary

Site name Center
Site number 04
Operator(s) TMiller
File name Center_20230424-163720.ft
Comment

Start time	4/24/2023 3:39 PM	Sensor type	Top Setting
End time	4/24/2023 4:31 PM	Handheld serial number	FT2H2219029
Start location latitude	43.029	Probe serial number	FT2P2219014
Start location longitude	-118.842	Probe firmware	1.30
Calculations engine	FlowTracker2	Handheld software	1.7

# Stations	Avg interval (s)	Total discharge (m³/s)
20	40	0.7567

Total width (m)	Total area (m²)	Wetted Perimeter (m)
8.016	5.71052	8.442

Mean SNR (dB)	Mean depth (m)	Mean velocity (m/s)
37	0.712	0.1325

Mean temp (°C)	Max depth (m)	Max velocity (m/s)
8.147	1.030	0.1840

Discharge Uncertainty		
Category	ISO	IVE
Accuracy	1.0%	1.0%
Depth	0.1%	0.9%
Velocity	0.2%	1.4%
Width	0.1%	0.1%
Method	1.0%	
# Stations	2.5%	
Overall	2.9%	2.0%

Discharge equation	Mid Section
Discharge uncertainty	IVE
Discharge reference	Rated

Data Collection Settings	
Salinity	0.000 PSS-78
Temperature	-
Sound speed	-
Mounting correction	0.000 %

Summary overview

No changes were made to this file
Quality control warnings



Discharge Measurement Summary

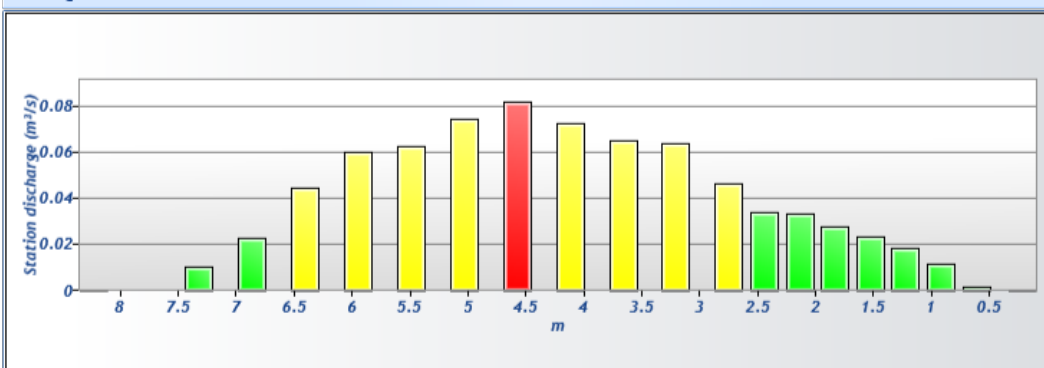
Site name Center
Site number 04
Operator(s) TMiller
File name Center_20230424-163720.ft
Comment

Station Warning Settings

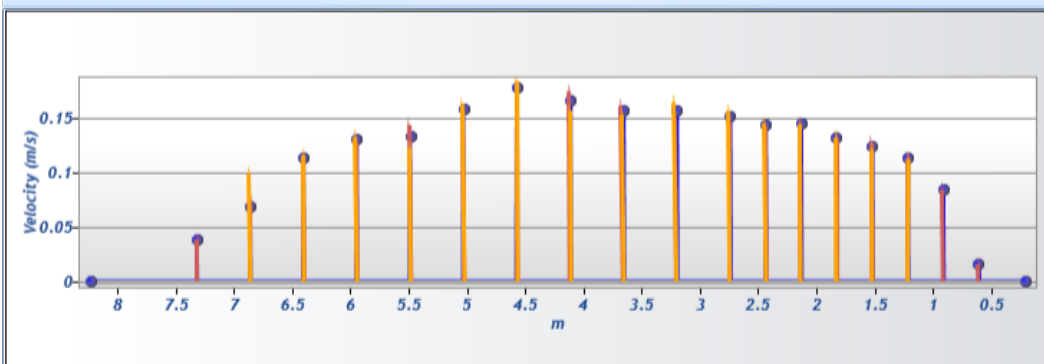
Station discharge OK Station discharge < 5.00%
Station discharge caution 5.00% >= Station discharge < 10.00%
Station discharge warning Station discharge >= 10.00%



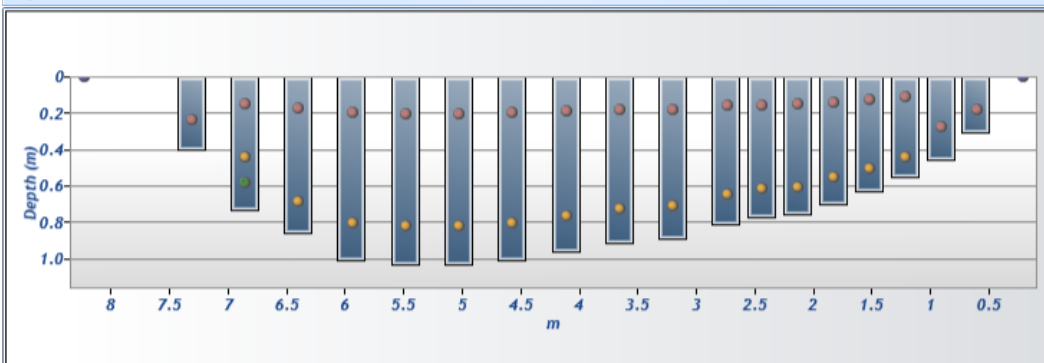
Discharge chart

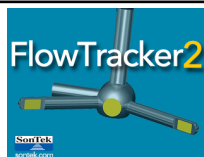


Velocity chart



Depth chart

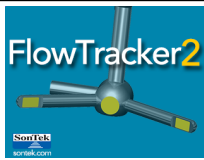




Discharge Measurement Summary

Site name Center
Site number 04
Operator(s) TMiller
File name Center_20230424-163720.ft
Comment

Measurement results															
St#	Time	Location (m)	Method	Depth (m)	%Depth	Measured Depth (m)	Samples	Velocity (m/s)	Correction	Mean Velocity (m/s)	Area (m ²)	Flow (m ³ /s)	%Q		
0	3:39 PM	0.213	None	0.000	0.0000	0.000	0	0.0000	1.0000	0.0158	0.00000	0.0000	0.00	✓	
1	3:39 PM	0.610	0.6	0.305	0.6000	0.183	80	0.0158	1.0000	0.0158	0.10684	0.0017	0.22	✓	
2	3:41 PM	0.914	0.6	0.457	0.6000	0.274	80	0.0843	1.0000	0.0843	0.13935	0.0118	1.55	✓	
3	3:44 PM	1.219	0.2/0.8	0.549	0.2000	0.110	80	0.1136	1.0000	0.1129	0.16723	0.0189	2.49	✓	
3	3:44 PM	1.219	0.2/0.8	0.549	0.8000	0.439	80	0.1121	1.0000	0.1129	0.16723	0.0189	2.49	✓	
4	3:47 PM	1.524	0.2/0.8	0.628	0.2000	0.126	80	0.1278	1.0000	0.1245	0.19138	0.0238	3.15	✓	
4	3:47 PM	1.524	0.2/0.8	0.628	0.8000	0.502	80	0.1212	1.0000	0.1245	0.19138	0.0238	3.15	✓	
5	3:50 PM	1.829	0.2/0.8	0.695	0.2000	0.139	80	0.1297	1.0000	0.1312	0.21182	0.0278	3.67	✓	
5	3:50 PM	1.829	0.2/0.8	0.695	0.8000	0.556	80	0.1327	1.0000	0.1312	0.21182	0.0278	3.67	✓	
6	3:52 PM	2.134	0.2/0.8	0.756	0.2000	0.151	80	0.1444	1.0000	0.1443	0.23040	0.0333	4.39	✓	
6	3:52 PM	2.134	0.2/0.8	0.756	0.8000	0.605	80	0.1443	1.0000	0.1443	0.23040	0.0333	4.39	✓	
7	3:55 PM	2.438	0.2/0.8	0.771	0.2000	0.154	80	0.1426	1.0000	0.1439	0.23504	0.0338	4.47	✓	
7	3:55 PM	2.438	0.2/0.8	0.771	0.8000	0.617	80	0.1453	1.0000	0.1439	0.23504	0.0338	4.47	✓	
8	3:58 PM	2.743	0.2/0.8	0.808	0.2000	0.162	80	0.1458	1.0000	0.1513	0.30774	0.0466	6.15	✓	
8	3:58 PM	2.743	0.2/0.8	0.808	0.8000	0.646	80	0.1568	1.0000	0.1513	0.30774	0.0466	6.15	✓	
9	4:01 PM	3.200	0.2/0.8	0.890	0.2000	0.178	80	0.1498	1.0000	0.1572	0.40692	0.0640	8.45	✓	
9	4:01 PM	3.200	0.2/0.8	0.890	0.8000	0.712	80	0.1646	1.0000	0.1572	0.40692	0.0640	8.45	✓	
10	4:04 PM	3.658	0.2/0.8	0.908	0.2000	0.182	80	0.1614	1.0000	0.1571	0.41528	0.0652	8.62	✓	
10	4:04 PM	3.658	0.2/0.8	0.908	0.8000	0.727	80	0.1528	1.0000	0.1571	0.41528	0.0652	8.62	✓	
11	4:07 PM	4.115	0.2/0.8	0.960	0.2000	0.192	80	0.1746	1.0000	0.1658	0.43897	0.0728	9.62	✓	
11	4:07 PM	4.115	0.2/0.8	0.960	0.8000	0.768	80	0.1571	1.0000	0.1658	0.43897	0.0728	9.62	✓	
12	4:09 PM	4.572	0.2/0.8	1.006	0.2000	0.201	80	0.1713	1.0000	0.1776	0.45987	0.0817	10.80	✓	
12	4:09 PM	4.572	0.2/0.8	1.006	0.8000	0.805	80	0.1840	1.0000	0.1776	0.45987	0.0817	10.80	✓	
13	4:14 PM	5.029	0.2/0.8	1.030	0.2000	0.206	80	0.1543	1.0000	0.1585	0.47102	0.0747	9.87	✓	
13	4:14 PM	5.029	0.2/0.8	1.030	0.8000	0.824	80	0.1628	1.0000	0.1585	0.47102	0.0747	9.87	✓	
14	4:17 PM	5.486	0.2/0.8	1.030	0.2000	0.206	80	0.1437	1.0000	0.1332	0.47102	0.0628	8.29	✓	
14	4:17 PM	5.486	0.2/0.8	1.030	0.8000	0.824	80	0.1227	1.0000	0.1332	0.47102	0.0628	8.29	✓	
15	4:20 PM	5.944	0.2/0.8	1.006	0.2000	0.201	80	0.1281	1.0000	0.1305	0.45987	0.0600	7.93	✓	
15	4:20 PM	5.944	0.2/0.8	1.006	0.8000	0.805	80	0.1329	1.0000	0.1305	0.45987	0.0600	7.93	✓	
16	4:22 PM	6.401	0.2/0.8	0.856	0.2000	0.171	80	0.1117	1.0000	0.1139	0.39159	0.0446	5.89	✓	
16	4:22 PM	6.401	0.2/0.8	0.856	0.8000	0.685	80	0.1160	1.0000	0.1139	0.39159	0.0446	5.89	✓	
17	4:25 PM	6.858	0.2/0.6/0.8	0.732	0.2000	0.146	80	0.0746	1.0000	0.0683	0.33445	0.0228	3.02	✓	
17	4:25 PM	6.858	0.2/0.6/0.8	0.732	0.6000	0.439	80	0.0992	1.0000	0.0683	0.33445	0.0228	3.02	✓	
17	4:25 PM	6.858	0.2/0.6/0.8	0.732	0.8000	0.585	80	0.0000	1.0000	0.0683	0.33445	0.0228	3.02	✓	
18	4:30 PM	7.315	0.6	0.396	0.6000	0.238	80	0.0389	1.0000	0.0389	0.27174	0.0106	1.40	✓	
19	4:31 PM	8.230	None	0.000	0.0000	0.000	0	0.0000		0.0389	0.00000	0.0000	0.00	✓	

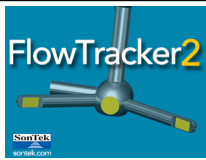


Discharge Measurement Summary

Site name Center
Site number 04
Operator(s) TMiller
File name Center_20230424-163720.ft
Comment

Quality Control Settings	
Maximum depth change	50.00%
Maximum spacing change	100.00%
SNR threshold	10 dB
Standard error threshold	0.0100 m/s
Spike threshold	10.00%
Maximum velocity angle	20.0 deg
Maximum tilt angle	5.0 deg

Quality control warnings							
St#	Time	Location (m)	Method	Depth (m)	%Depth	Measured Depth (m)	Warnings
12	4:09 PM	4.572	0.2/0.8	1.006	0.2000	0.201	High Stn % Discharge
12	4:09 PM	4.572	0.2/0.8	1.006	0.8000	0.805	High Stn % Discharge
17	4:25 PM	6.858	0.2/0.6/0.8	0.732	0.2000	0.146	SNR Threshold Variation
17	4:25 PM	6.858	0.2/0.6/0.8	0.732	0.6000	0.439	SNR Threshold Variation
17	4:25 PM	6.858	0.2/0.6/0.8	0.732	0.8000	0.585	SNR Threshold Variation
18	4:30 PM	7.315	0.6	0.396	0.6000	0.238	Boundary Interference, Large SNR Variation, SNR Threshold Variation
19	4:31 PM	8.230	None	0.000	0.0000	0.000	Water Depth > QC



Discharge Measurement Summary

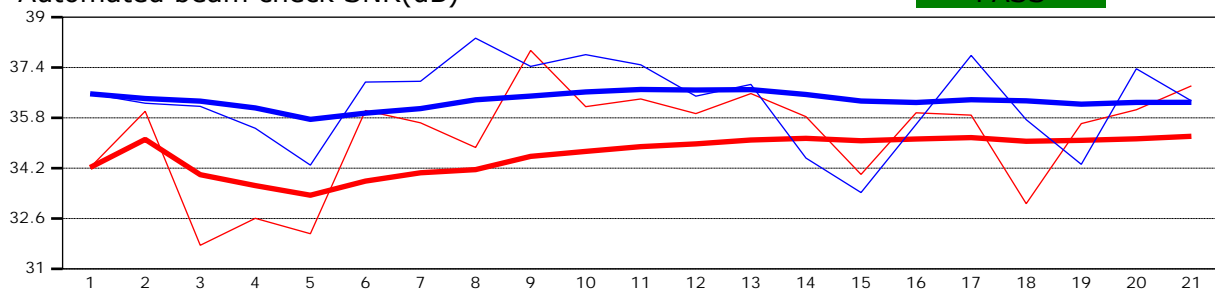
Site name Center
Site number 04
Operator(s) TMiller
File name Center_20230424-163720.ft
Comment

Beam 1	
Beam 2	

Automated beam check Start time 4/24/2023 3:38:56 PM

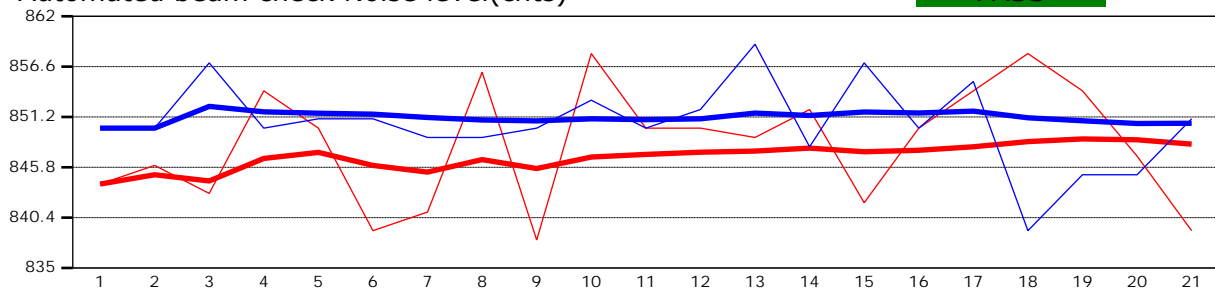
Automated beam check SNR(dB)

PASS



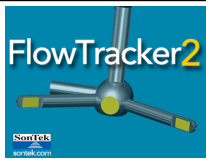
Automated beam check Noise level(cnts)

PASS



Automated beam check Quality control warnings

No quality control warnings



Discharge Measurement Summary

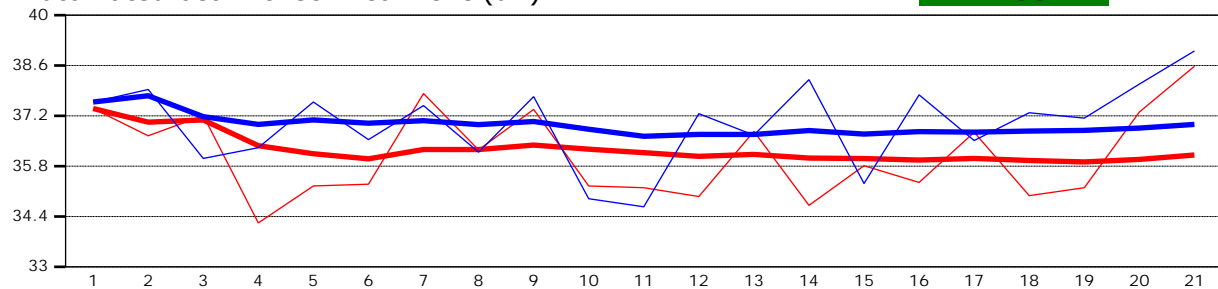
Site name Center
Site number 04
Operator(s) TMiller
File name Center_20230424-163720.ft
Comment

Beam 1	
Beam 2	

Automated beam check Start time 4/24/2023 3:38:56 PM

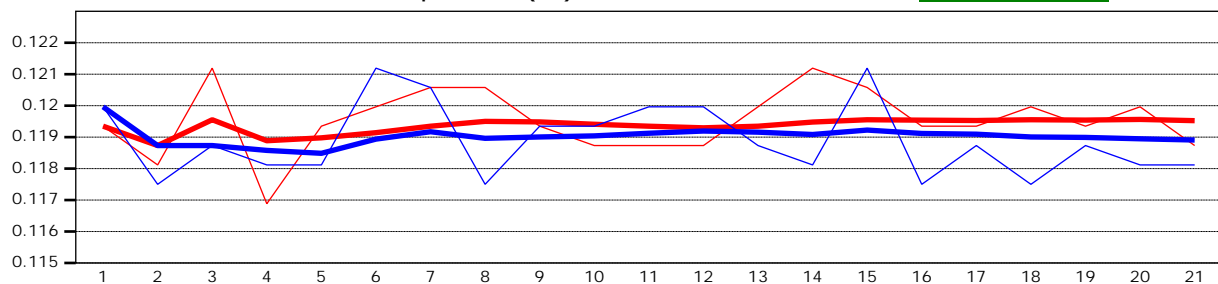
Automated beam check Peak level(dB)

PASS



Automated beam check Peak position(m)

PASS



Automated beam check Quality control warnings

No quality control warnings